



PBS-Kansas

Positive Behavior Support
Resource Tour

www.pbskansas.org

1

Definition of Positive Behavior Support

- Positive behavior support is the integration of
 - Valued outcomes
 - Behavioral and biomedical science
 - Validated procedures
 - Systems change

In order to enhance quality of life and prevent problem behavior

Note: PBS plans require our teams and those supporting adults to change their behavior

2

PBS Kansas: Vision and Mission

- **PBS Kansas Mission Statement**
The PBS Kansas (PBSKS) initiative promotes the use of proactive evidence-based strategies to meet the social and emotional needs of all Kansans by partnering across systems to enhance behavioral expertise and use new and existing resources in an efficient, effective manner.
- **PBS Kansas Vision Statement**
Healthy relationships built by Positive Behavior Support (PBS) will enhance quality of life across the life span.

3

Reason for Today's Tour

- PBS Kansas members wanted to reach out across the state
- In April, 2008 a distance learning presentation was given
 - Information was shared about PBS in Kansas
 - Discussion about training opportunities occurred
- Requests for information from attendees resulted in this tour

4

Long term PBS Kansas Goals

- Provide distance events that cover topic areas in more detail including
 - School-wide PBS
 - Early childhood PBS (Program-wide PBS)
 - Using PBS to support Adults with Disabilities
 - Other areas are welcome!

5

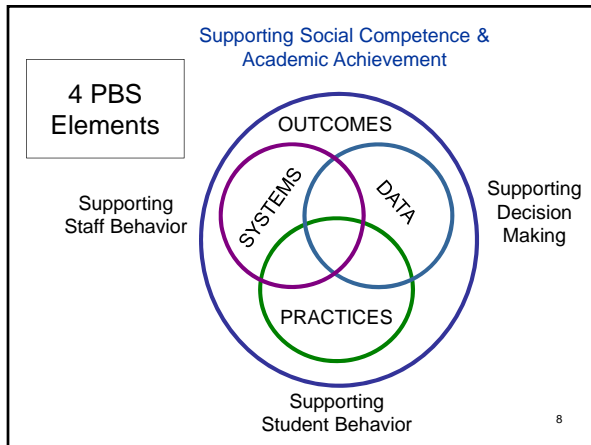
Purpose of Today's Presentation

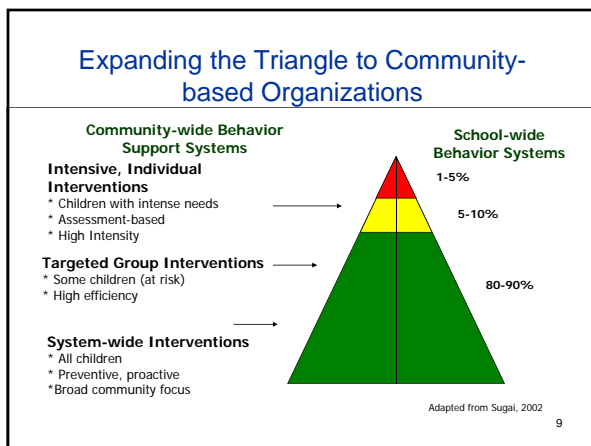
- Share information about PBS trainings and supports available in Kansas
- Tour internet-based resources that can be used to learn about PBS
- Answer questions you have about the resources that are available in Kansas

6

Map of Conference Call Attendees

7







First Website Tour: PBS Kansas

www.pbskansas.org

10

School-Wide Systems for Student Success & Multi-tier System of Supports

Academic Systems

Intensive, Individual Interventions

- Individual Students
- Assessment-based
- High Intensity

Targeted Group Interventions

- Some students (at-risk)
- High efficiency
- Rapid response

Universal Interventions

- All students
- Preventive, proactive

TIER III

TIER II

TIER I

Behavioral Systems

Intensive, Individual Interventions

- Individual Students
- Assessment-based
- Intense, durable procedures

Targeted Group Interventions

- Some students (at-risk)
- High efficiency
- Rapid response

Universal Interventions

- All settings, all students
- Preventive, proactive





Kansas Multi-Tiered System of Support



11

Kansas School-wide Positive Behavior Support (SWPBS) and Multi-tier System of Supports

<http://www.pbskansas.org/schoolwide/index.html>

13

Project Stay

<http://www.projectstay.com/>

14

National Technical Assistance Center on Positive Behavioral Interventions and Supports

www.pbis.org

15

Brief Discussion About Early Childhood Program-wide Positive Behavior Support

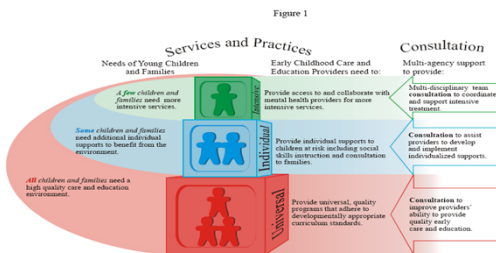
16

The Teaching Pyramid Fox, Dunlap, Hemmeter, Joseph, & Strain (2003)



<http://www.kskits.org/ta/Packets/PosBehSupport.shtml> 17

The Oregon Model for Supporting Young Children's Social and Emotional Development in Early Childhood



<http://www.kaimh.org>

18

**Kansas Inservice Training System (KITS)
Professional Development for Early
Childhood Professionals and Families**

<http://www.kskits.org/>

19

**Technical Assistance Center on
Social Emotional Intervention for
Young Children**

<http://www.challengingbehavior.org/explore/pbs/pbs.htm>

20

**The Center on the Social and
Emotional Foundations for
Early Learning (CSEFEL)**

<http://www.vanderbilt.edu/csefel/>

21

Multi-disciplinary Resources

(Resources for family members,
service providers, and educators
supporting
children and adults)

22

Kansas Institute for Positive Behavior Support

www.kipbs.org

23

Brief Summary of Interagency PBS Facilitator Training

State Funding for Positive
Behavior Support from Social and
Rehabilitation Services (SRS)

24

Kansas Institute for Positive Behavior Support (KIPBS)

- Statewide PBS training program
 - Child Welfare
 - Mental Health
 - Developmental Disabilities
- Federal Medicaid funding for graduates
 - Certification for Medicaid reimbursement
- Kansas State Plan includes PBS
 - Children who are Medicaid eligible

25

Over 75 Professionals Trained

- Developmental Disability Services
- Mental Health
- Children and Family Services
- Education
- Independent Contractors
- District Tertiary Trainers in School-wide Positive Behavior Support (SWPBS)

26

Applications for KIPBS Training

- Call of Applications is now starting
- Deadline for applications: January, 2009
- Training starts in March, 2009
- Application information is available at:
http://www.kipbs.org/new_kipbs/basicInfo/trainin gApps.html

(go to main kipbs.org, left hand menu, training section)

27

Beach Center on Disability

www.beachcenter.org

31

International Association for Positive Behavior Support

www.apbs.org

32

Discussion Questions

- What questions do you have about PBS as it relates to your field?
- Do you have questions about the websites that were reviewed today?
- Do you have questions for other individuals here today who are implementing PBS?

33
